

Certificate Issued To:  
**Hoodoba® Hoodia**



Work performed at:  
**Alkemists Laboratories**  
1260 Logan Ave B2  
Costa Mesa, CA 92626  
714-754-HERB (4372)  
714-668-9972 (FAX)  
E-mail: info@alkemist.com  
Web Site: www.alkemist.com

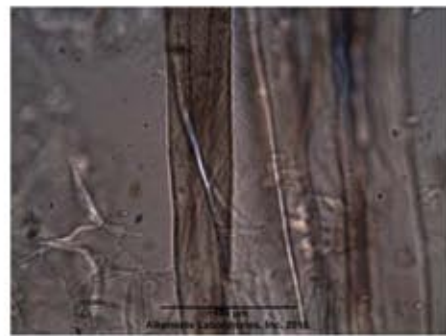
## Certificate of Analysis 3 of 3: Hoodia gordonii (0315E9)

Macroscopy & Microscopy with Digital Photo-Documentation

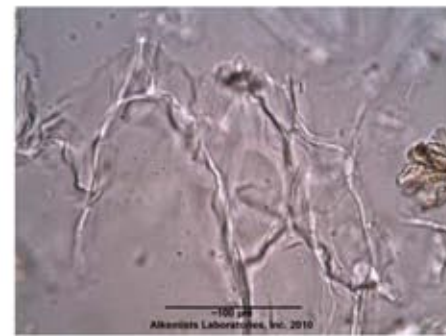
1



2



3



Company Name:	Hoodoba® Hoodia Diet Pills
Title:	Hoodia gordonii
Plant Part:	aerial part
Sample Received:	2/10/2010
Sample Description:	white plastic bottle
Form of Botanical:	crude plant powder
Lot #:	0315E9
Sample #:	AU04110FMG
Latin Name:	Hoodia gordonii (Masson) Sweet ex Decne
Reference Sample #:	AU14207AHPA1, AU21906DBL, AU29006TA2, AU20604AP, AU15606AHP2, AU30405TA1 Hoodia gordonii (Masson) Sweet ex Decne authenticated by macroscopic, microscopic &/or TLC studies according to the reference source cited below held at Alkemists Pharmaceuticals, Costa Mesa, CA.
Analyst:	E. Sudberg
Sample Findings:	(1) large thin walled parenchyma showing wrinkled
Magnification:	(2) 400X
Chemical Reagents:	(2) acidified chloral hydrate glycerol solution
Sample Findings:	(2) fiber showing whirled striations
Magnification:	(3) 400X
Chemical Reagents:	(3) acidified chloral hydrate glycerol solution
Sample Findings:	(3) large thin walled parenchyma showing wrinkled
Reference Source:	Identification and determination of purity of powdered raw materials labeled as Hoodia gordonii stems, American Herbal Products Association 2007 SOP-1000-0001-R1 USP-PF, Vol. 27(2) [Mar.-Apr. 2001]; Official Methods of Analysis of AOAC, 16 <sup>th</sup> Ed.

### Comments & Conclusions:

This sample is representative of Hoodia gordonii (Masson) Sweet ex Decne based on authenticated reference samples and the consistent characteristic cellular structure of an aerial part as well as the reference cited above. The characteristic cellular structures identified in this sample are the fiber showing whirled striations seen in micrograph (2) above. In micrograph (3) we see the large thin walled parenchyma showing wrinkled. **This test sample, Hoodia gordonii (0315E9), is consistent with the microscopic characteristics of the reference samples of Hoodia gordonii (Masson) Sweet ex Decne used above & is characteristic of Hoodia gordonii (Masson) Sweet ex Decne aerial part.**

**NOTE: The presence of soluble excipients and other plant species material was not detected in this test sample.**

Analyzed by: Elan M Sudberg

Examined, Reviewed & Authorized by: Sidney Sudberg, Director, Alkemists Labs

Elan Sudberg

Digitally signed by Elan Sudberg  
DN: cn=Elan Sudberg,  
email=elan@alkemists.com,  
o=Alkemists Pharmaceuticals, c=US  
Date: 2010.02.24 12:26:53 -0800

Report Date: 2/18/2010

This report applies to the sample investigated and is not necessarily indicative of the quality or condition of apparently identical or similar products. This report is for the exclusive use of the party who requested the report and not for public dissemination or use by third parties, including for promotional purposes, without the prior written permission of Alkemists Pharmaceuticals, Inc. This report provides technical results for a specific sample and the report shall not be altered, modified, supplemented or abstracted in any manner. Any violation of these conditions renders the report and its results void. © 2010 Alkemists Pharmaceuticals, Inc. All Rights Reserved